



Team GRANIT

Green Radio and Adaptive Nodes for the Internet of Things

Lannion

Activity Report

2024



1 Team

Name	Forename	Position
BERDER	Olivier	Full Professor, UR (IUT Lannion)
CARQUIN	Émilie	Research Assistant, UR (ENSSAT Lannion)
COURTAY	Antoine	Associate Professor, UR (ENSSAT Lannion)
GAUTIER	Matthieu	Full Professor, UR (IUT Lannion)
GERZAGUET	Robin	Associate Professor, UR (ENSSAT Lannion)
LE GENTIL	Mickaël	Research Engineer, UR (ENSSAT Lannion)
ROCHER	Romuald	Associate Professor, UR (IUT Lannion)
SCALART	Pascal	Full Professor, UR (ENSSAT Lannion)
THÉPAULT	Joëlle	Research Assistant, UR (ENSSAT Lannion)
VRIGNEAU	Baptiste	Associate Professor, UR (IUT Lannion)

Table 1: GRANIT permanent members

The GRANIT team comprizes 8 permanent research members: 3 full professors (*Professeur des Universités*), 4 associate professors (*Maître de conférences*) and 1 research engineer, all from University of Rennes (UR). There are currently 8 PhD students in the GRANIT team. Table 1 lists the permanent staff and table 2 the current PhD students and other staff.

2 Overall Objectives

2.1 Overview

General purpose wireless devices as smartphones already have to carry more and more data while keeping their autonomy as long as possible, but the next challenge they will face is the ubiquity of users. This ability to be connected everywhere in a continuous and transparent way, keeping the same quality of services (QoS) whatever the environment, implies that devices can deal with different wireless standards, furthermore choosing for each of them the most energy efficient configuration. In this connected world, even the smallest sensors will be able to send their data over what is called Internet of Things (IoT), such that every user in the world could reach it. The problem that designers will face is then the autonomy of such sensors, since radio is very energy consuming, and obviously, the more sensors we place, the less we want to change batteries.

In such a context, the GRANIT team purpose is to design algorithms and architectures able to adapt to environment parameters, such as propagation channel characteristics, wireless traffic conditions network topology or possibilities of energy harvesting, while respecting applications requirements in terms of data rate, reliability, latency, and most of all, life time of involved systems, etc. As represented by Fig. 1, the quantitative target of GRANIT over the next ten years is to decrease the energy of radio transmission by several orders of magnitude to reach 1 pJ per bit. The GRANIT members have a strong experience on wireless

Name	Forename	Status	Period
COURJAULT	Jules	PhD	06/2020 - 12/2024
EL RHAZ	Samir	PhD	10/2020 - 12/2024
ARGOTE AGUILAR	Jesus	PhD, Research Engineer ¹	Since 10/2021
CHILLET	Alice	PhD, Lecturer ²	Since 10/2021
BALTI	Nidhal	PhD	Since 02/2022
BOURO	Souébou	PhD	Since 10/2022
MULLER	Thomas	PhD	Since 10/2022
CHEVALIER	Dylan	PhD	Since 10/2022
LOUNES	Gaëtan	PhD	Since 04/2023
BOTHEREAU	Emma	PhD	Since 10/2023
KOUDDANE	Nada	PhD	Since 10/2024
LAKHDARI	Adam	PhD	Since 10/2024
LACROIX	Marie-Anne	Lecturer	Since 09/2024
BAZERQUE	Paul	Research Engineer	Since 06/2023
MOUSSA	Taha	PhD, Research Engineer ³	Since 04/2024

¹ Jesus defended his PhD on December 16 and is now Research Engineer

² Alice defended her PhD on November 21 and is now Lecturer

³ Taha was a Research Engineer and is a PhD student since October 2024

Table 2: GRANIT other staff

sensor network (WSN) protocols (MAC and PHY layers) and hardware architectures, and developed several WSN platforms and demonstrators for various areas monitoring applications or dedicated to human body. As energy can now be scavenged from the direct environment of sensor nodes (light, heat, vibrations, etc.), a harvesting board can be added to WSN platforms. One of the objectives of the GRANIT team is then to design power management strategies, coupled to above-mentioned adaptive algorithms in order to reach real energy autonomy of the sensor nodes. Cooperation between nodes, either through distributed computing to find the best radio/computation trade-off or through the choice of the best cooperative relaying schemes, represents also a key challenge for the design of energy-efficient wireless systems. The GRANIT team will continue to investigate this very promising field at both physical and medium access layers. Last but not least, the aim of GRANIT team is also to efficiently implement these algorithms onto different targets, from low power microcontrollers and/or low power FPGAs for WSN solutions to powerful system-on-chip and multi-core systems for more computing-intensive applications. To answer the demand of agile devices, software defined radio solutions (SDR) will especially be considered, not only for high data-rate mobile standards such as 5G, but also for wireless sensor networks, enabling testbeds for low power adaptive and/or cooperative solutions.

Energy autonomous Communications

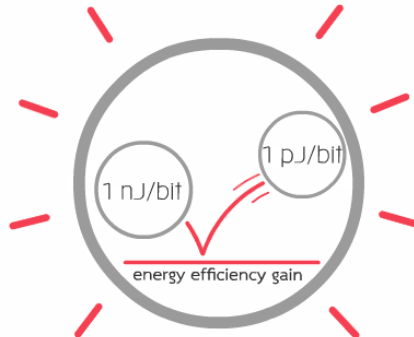


Figure 1: Transmission Energy efficiency target for the next decade

2.2 Key Issues

Wireless communications represent obviously the major domain of applications for the adaptive algorithms and/or architectures proposed by the GRANIT team. The range of devices that fall within this denomination is however very large, and our developments will mainly address two different targets, namely next generations of wireless systems (5G, beyond 5G...) and wireless sensor networks. In addition to analytical derivations and simulations, the GRANIT team clearly aims at using platforms to evaluate our research performance, but also to reach what could be called a platform-based design, meaning that the constraints of the envisaged platforms are taken into account very soon in the design process. Upon this basis, the research topics of the GRANIT team can be represented as Figure 2.

Focusing on the baseband processing of the physical layer, two main issues are raised by the new requirements of wireless communications: (i) What are the signal processing techniques that could help improving the link quality, the spectrum usage and the energy efficiency? (ii) What kind of hardware could associate energy efficiency and high-performance computing of these signal processing techniques? A huge effort is currently spent on proposing new physical layers and many digital communication techniques have been widely studied.

Taking into account the specificities of the targets envisaged for the adaptive algorithms, we will adapt the latter to design very energy-efficient wireless transmissions. To a certain degree, we claim that software-based systems will provide the flexibility to adapt to new requirements and make it easier to introduce innovation in the architecture¹. Thus, our proposal relies on high-level synthesis (HLS) in order to bridge the gap between high-level specifications and hardware implementation². Depending on the hardware target, hardware/software partitioning, reconfiguration capability or power management will be included in the design flow.

The objective of GRANIT members is mainly twofold, firstly confirm their expertise on

¹J.F. Jondral, Software-defined radio: basics and evolution to cognitive radio. *EURASIP J. Wireless Commun. Netw.*, 2005, pp. 275-283

²P. Coussy, D. Gajski, M. Meredith, A. Takach, An Introduction to High-Level Synthesis, *IEEE Design & Test of Computers*, 26 (4): 8-17, 2009

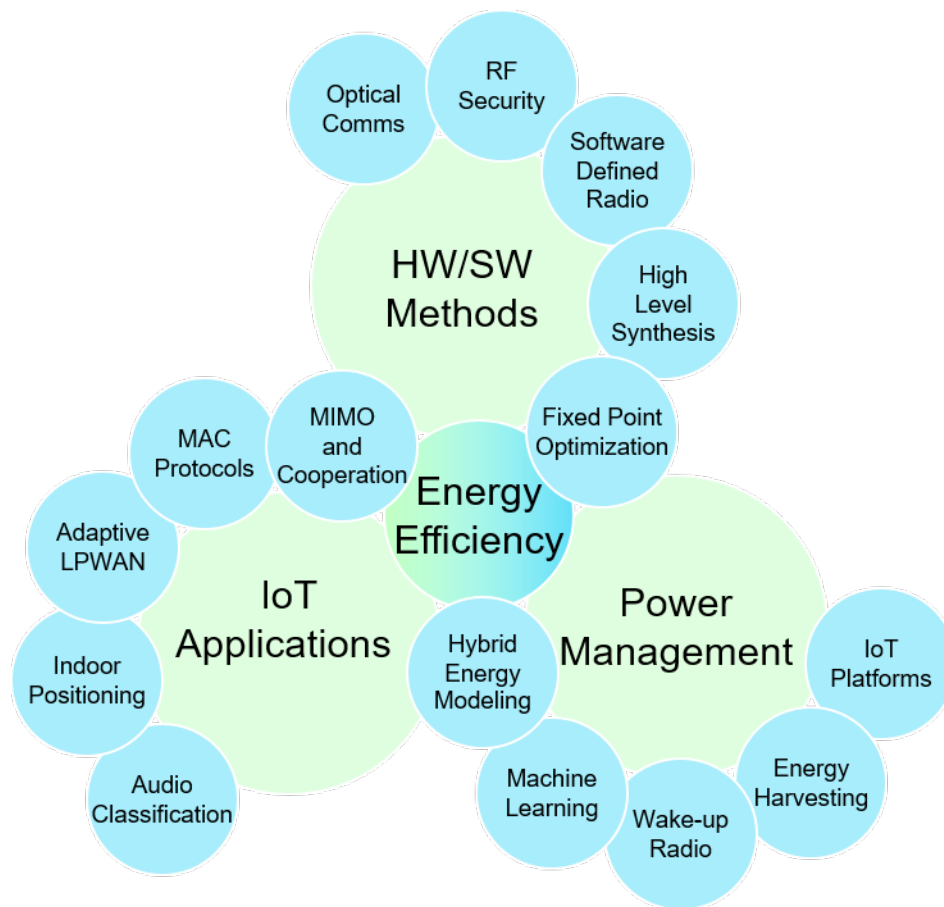


Figure 2: GRANIT Research Topics

IoT core technologies while exploring further the possibility to implement as close as possible application algorithms on hardware targets, secondly to take profit of heterogeneity of emerging software radio solutions to define new partitioning methodologies and address security and of course energy issues. As illustrated by Fig. 2, energy efficiency remains the principal concern of the team, and will be the common denominator of most of the envisioned research. This concern will feed three main topics, namely Power management, Hardware/Software (HW/SW) methods and IoT Applications. Albeit being different and complementary, the intersection between them is far from null and most of the conducted researches will be of course related to several topics.

3 Scientific Foundations

3.1 Positioning in Architecture Department of IRISA

GRANIT belongs to D3 department of IRISA dedicated to Architecture and takes place besides PACAP and TARAN teams. While these latter teams aim to design new architectures

and associated compiling tools, the approach of GRANIT is more user or application-centric, i.e. our research will mostly rely on existing hardware components (even though some specific designs will still be achieved) and take into account the constraints that they incur to develop efficient algorithms. This interaction between architecture and algorithms is explored from both angles of adaptivity and cooperation.

3.2 Power management

One of the purposes of the GRANIT team is to consider algorithmic-level optimizations for energy savings. More precisely, the relationship between computation and communication will be studied from the energy point of view, in order to enable dynamic energy management. Reducing power due to radio communications can be achieved by two complementary main objectives: (i) to minimize the output transmit power while maintaining sufficient wireless link quality and (ii) to minimize useless wake-up and channel hearing while still being reactive. For this purpose, this project aims at defining and implementing new power-aware techniques that can dynamically adapt at run-time:

- the chosen algorithms of the radio physical layer (e.g. modulation, spreading, bit-rate, cooperative strategies, etc.),
- the wake-up interval of the MAC protocol,
- the accuracy (bit-width) of signal processing algorithms,
- the transmit power,

depending on some parameters such as:

- radio channel conditions,
- quality-of-service (QoS) required by the application,
- harvested energy,
- topology of the networks.

The global framework of such an optimization can be represented as in Figure 3.

The first research topic therefore directly concerns power management strategies, which aims either at decreasing as much as possible the energy consumption of wireless systems (thus increasing the latter lifetime) or at using available energy as good as possible in case of energy harvesting. GRANIT team has acquired a renowned expertise in the latter case and proposed many power managers, first for periodic sources and recently for model-free cases. However, there are still many approaches to explore to propose new energy management strategies. The first step is to elaborate accurate models, using both experiments and benchmarks to feed analytical derivations, leading to what we call Hybrid Energy Modelling. If the methodology is quite generic, the obtained model relies on the IoT technology itself, which needs a strong expertise on IoT standards and platforms. The design of the latter is one of the

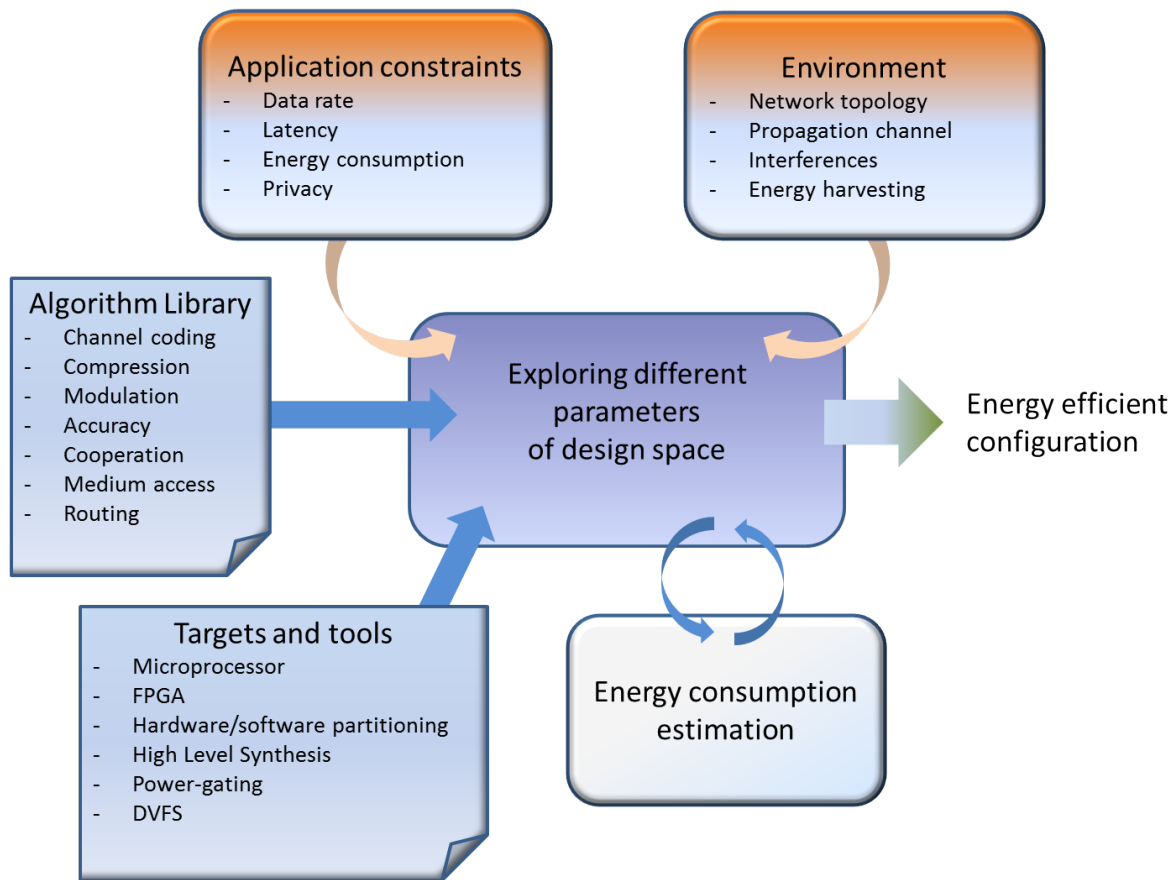


Figure 3: GRANIT Optimization Methodology

specificities of GRANIT since the team has designed several IoT platforms with or without energy harvesting capabilities, and we really want to continue to go until this hardware design and/or integration step to validate all our algorithms. It has to be mentioned that thanks to industrial collaborations and collaborative projects, GRANIT has benefited for five years from the support of several engineers that help researchers to maintain and design the platforms. This development team is shared with TARAN team, is composed of four engineers in average, and is an asset for both teams that we absolutely want to preserve. The recent development of energy efficient wake-up radios makes possible the continuous listening of wireless channels, decreasing simultaneously energy consumption and latency. But all existing wake-up radios are very application-specific and are not able to adapt themselves and find the best trade-off between energy consumption, range and latency in case of varying conditions. One of the directions we want to explore is to design smart and adaptive wake-up radios at both hardware and software levels, e.g. using light channel coding, soft decoding of addresses, adaptive preamble lengths... Finally yet importantly, it is not possible to avoid the investigation of machine learning for energy management. In previous works, we have shown the efficiency of reinforcement learning for energy harvesting nodes, but this has to be confirmed in industrial

deployments with severe constraints. Machine learning is also very promising to help to adapt parameters at both physical layer (modulation, coding, spreading) and access layer (power allocation, wake-up interval...), but the overhead of such an optimization framework has to be carefully studied.

Energy harvesting Advancements in renewable energy sources, such as solar, thermal or wind, are increasing the attention in autonomous Wireless Sensor Networks (WSN). Everlasting energy harvesting allows long-term operations of wireless nodes, which can extremely reduce the cost of battery charging or replacement. Moreover, it has opened a new paradigm for designing Power Managers in self-powered autonomous nodes. Instead of minimizing the consumed energy to maximize the system lifetime as in battery-powered nodes, the PM dynamically adapts the consumed energy according to the fluctuations of the harvested energy, leading to Energy Neutral Operation (ENO)³.

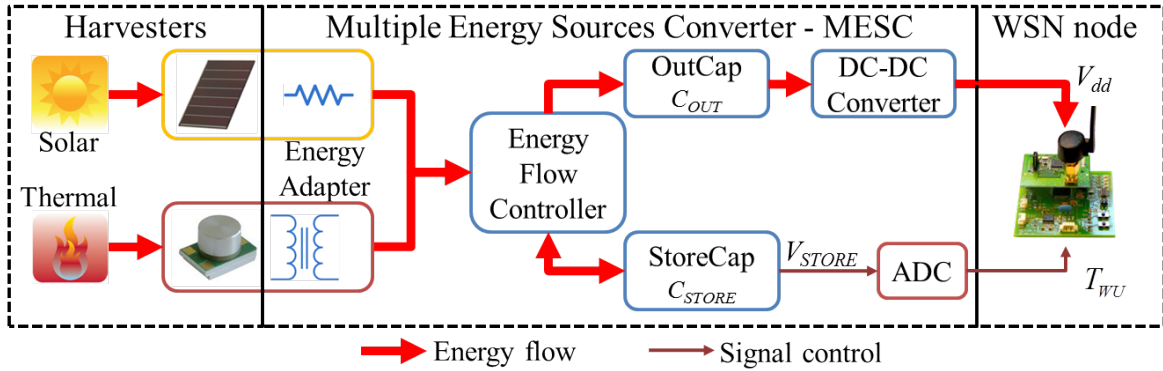


Figure 4: GRANIT Hardware Architecture of our Energy Harvesting Nodes

The GRANIT team activities in EH-WSN aim at designing and implementing new PM (Fig. 4) able to deal with the environment constraints and ensure ENO by tuning sensing, processing and communication parameters.

Wake-up radio Recently, a new consolidated technology that helps to achieve the trade-off between power consumption and latency has appeared. This technology is called Wake-up Radio (WuR). WuR is a secondary Ultra Low Power (ULP) radio subsystem that is connected to the main node. The WuR can be always on or duty cycled and its power consumption is several orders of magnitude less than that of the main node. The WuR is continuously or periodically listening to the channel while the main radio is in sleep mode, and when a specific signal called Wake-Up Beacon (WUB) is received, the WuR wakes up the main radio through an interrupt. Indeed, the WuR allows an asynchronous wake-up of the main node with a low latency. Recent circuit designs of WuR embed a decoding capability through a ULP-MCU or

³A. Kansal, J. Hsu, S. Zahedi, and M. B. Srivastava, Power management in energy harvesting sensor networks, *ACM Trans. Embed. Comput. Syst.*, vol. 6, no. 4, Sep. 2007

a correlator allowing to wake up only a specific node, thus reducing considerably the waste of energy consumption of the main radio. The fact that the WuR has an ultra low power consumption imposes hardware constraints to keep it simple. Consequently, in addition to a small bit-rate, the WuR has a low sensitivity, which induces a range mismatch between the WuR (short range in the order of 20m) and the main radio (in the order of 100m in case of IEEE 802.15.4). Furthermore, the robustness of the WuR presents also a bottleneck, it is very sensitive and therefore subject to noise perturbations, inducing false wake-up. Taking profit of the micro-controller embedded in the WuR (or further hardware modifications, e.g. external ADC), GRANIT team will explore various possibilities to make the WuR smarter. Furthermore, novel MAC protocols leveraging a heterogeneous network architecture composed of both long-range and ultra low power short-range WuRs have to be envisioned.

3.3 Hardware/Software methods

The second topic aims at defining tools and methodologies for efficient implementation of digital communications and signal processing algorithms. Most of emerging processing platforms, even those dedicated to low power applications for IoT, are indeed heterogeneous and composed of several processing units, that can be either dedicated to some resource hungry processing, fully or partly reconfigurable or general purpose. However, very few methodologies exist yet to take profit of this heterogeneity and efficiently partition processing over hardware or software resources. One key leveraging point is to have a unified methodology that can address different architectures with the same formalism (and the same programming language). Classic approaches are often based on low level languages (typically C or C++) to have efficient machine code at the price of the flexibility and the code concision. This is not always desirable due to the complexity of some algorithms (as most of machine learning frameworks). On the other hand, high level language (such as Python) offers a very appealing flexibility at the price of the performance. . . which often leads to the necessity to recode low level software processing blocks. GRANIT members will pay a particular attention to Julia [BEKS17], a scientific computing language that allows concise code description (e.g. fast prototyping) with high performance (just in time (JIT) compilation using LLVM [LA04]). This methodology should be particularly suited to Software-defined radios (SDR), which have been gaining interest in the last decades. SDR is radio communication system where components that have been traditionally implemented in hardware (e.g. mixers, filters, amplifiers, modulators/demodulators, detectors, etc.) are instead implemented by means of software on a personal computer or embedded system. Some recent designs are even so small and restrained in energy that they become an appealing target for IoT applications [CLK+16], widening the initial scope of SDR applications. GRANIT, with its broadened expertise on IoT standards will be an active actor on light SDR for IoT.

Software Defined Radio Software Defined Radio (SDR) is a flexible signal processing architecture with reconfiguration capabilities that can adapt itself to various air-interfaces. It was first introduced by ⁴ as an underlying structure for Cognitive Radio (CR). The FPGA

⁴Joseph Mitola J. Mitola III and G. Q. Maguire, Jr., Cognitive radio: making software radios more personal, *IEEE Personal Communications Magazine*, vol. 6, nr. 4, pp. 13-18, Aug. 1999

(Field Programmable Gate Array) technology is expected to play a key role in the development of Software Defined Radio (SDR) platforms. FPGA-based SDR is a quite old paradigm and we are fronting this challenge while leveraging the nascent High Level Synthesis tools and languages. Actually, our goal is to propose methods and tools for rapid implementation of new waveforms in the stringent flexibility paradigm. We propose a novel design flow for FPGA-based SDR applications. This flow relies upon HLS principles and its entry point is a Domain-Specific Language (DSL) which partly handles the complexity of programming an FPGA and integrates SDR features. Our studies include :

- defining a Domain-Specific Language for high-level descriptions of radio waveforms,
- generating hardware description (RTL) through the automatic synthesis of the DSL,
- including design constraints in the description through Design Space Exploration of the architecture,
- allowing Dynamic Partial Reconfiguration in the design process,
- validating the design flow from testbed with developments on the GRANIT platforms for multiple standards.

RF Security Information systems are now massively integrated into both industry and administration processes. Thus, their security is matter of importance especially when considering the storing and exchange of sensitive data. Sensitive data is also called 'red' data, in opposition with the non-sensitive (or protected by encryption) 'black' data. This crucial challenge is present at multiple scales, and leads to the emergence of different security fields linked to data protection (defense protocols) and to data interception (attack protocols)

Since few years, a new threat has emerged with the detection of the red data due to unwanted phenomena. This attack is done trough an over the air interception and thus is difficult to detect. These kind of attacks (called TEMPEST attacks by the NSA) consist in detecting an hidden channel that bear the sensitive information and then decode the 'red' information . This unwanted channel may exist due to different physical phenomena such as electro-magnetic coupling, radio frequency leakages, or mechanical mechanisms.

In GRANIT team we have a strong interest on these kinds of thread among three main axis:

- We make thorough analysis on some potential security beaches on existing standards (Bluetooth, Zigbee...) and boards (System On Chips)
- We also conduct studies and analysis on how Software Defined Radio (SDRs) can increase the criticality of TEMPEST attacks making discrete, compact, long range interception devices handy. On this particular aspects, efficient use of SDR is of importance due the large bandwidths and the harsh real time constraints encountered.
- We investigate methods to be able to identify a transmitter only based on the distortions induced by the transmitted signal. These distortions are due to analog stages of the transmitter and are called Radio Frequency Fingerprint (RFF). The RFF can be used as a non falsifiable identifier

3.4 IoT applications

Some applications, as smart cities, connected farms or wildlife monitoring require transmission of data over long distances at a reasonable energy cost. Emerging standards known as Low Power Wide Area Networks (LP-WAN) respect these requirements by proposing trade-offs between transmission range, data rate, and energy consumption. Most of them are tunable through modulation or coding parameters, such as LoRa, and GRANIT team has acquired a highly recognized expertise on LPWAN adaptation to device environment (propagation, interference, energy harvesting...). However severe propagation constraints have still to be explored, for example for factories of the future that represent very specific environments that can vary a lot from one place to another. Indeed, the indoor environment with a lot of metallic structures and multiple reflectors may lead to severe attenuation, and specific power equipment or machine tools generate impulsive noise. In order to efficiently deploy wireless sensor nodes in factories, there is a crucial need for fast and accurate performance estimation of IoT technologies in this particular context. Based on these results, GRANIT will also explore the possibility to dynamically adapt transmission parameters thanks to reinforcement learning.

GRANIT has a historical expertise on MIMO systems, especially on precoding, whether distributed or not. Precoding aims at using the channel knowledge at the transmitter to adapt the signal to be transmitted to the propagation conditions. Widely used for cellular systems where multiple antennas are embedded on base stations (a.k.a massive MIMO) and mobile devices, precoding can also be used in a distributed and cooperative manner for small IoT nodes, and GRANIT will explore this approach in a security context. A wireless transmission is indeed naturally subject to interception (passive eavesdropping). To circumvent this and increase the secrecy of the transmission, different techniques can be used and can be greatly improved when done in a cooperative manner. In the following years, we will study on how the increasing number of antennas and how the use of precoding/beamforming strategies can improve the secrecy rate of an IoT communication link.

For most of IoT sensor nodes, the communication part is the most energy consuming, and radio activity has therefore to be reduced as much as possible, to avoid idle listening and over-hearing. GRANIT will continue to explore this degree of freedom and propose adaptive MAC protocols for heterogeneous systems with several coexisting standards and technologies. For example, heterogeneous networks can be composed of LPWAN and WLAN nodes, potentially equipped with wake-up receivers, with energy harvesting capabilities... As the range and the energy autonomy of all these devices are not the same, there is a crucial need for access protocols that combine all these wireless technologies to reach the best quality of experience as possible.

Indoor positioning Among possible applications of IoT networks, let us emphasize two main topics that GRANIT members want to explore. The first one is indoor localization, useful for industry 4.0, logistics, but also museums, that all require accurate positioning (around 10 cm). In such a stringent requirement, Ultra Wide Band (UWB) based techniques have emerged as accurate solutions. Such radios combine low to medium rate communications with positioning capabilities using ranging techniques. If UWB offers outstanding accuracy, the performance significantly degrades in severe environments (multipath in crowded rooms,

impulsive noise in factories). Moreover, to propose energy efficient solutions, a complete cross layer approach has to be envisaged, including hybrid algorithms combining Two Way Ranging (TWR) and Angle of Arrival (AoA) methods, as well as dedicated MAC protocols.

Audio classification The second one relates to audio processing, whether for spatialized sound transmission, in relation with localization explained hereabove, or for context recognition. More and more applications indeed need accurate context recognition to propose adequate services and acoustic sensors appear as very efficient to discriminate environments. The multiplicity of sensors in the same scene obviously enrich the information but transmitting the whole audio flux is very energy consuming. GRANIT wants to explore the possibility of deporting processing as close as possible to the sensor, which i) decreases the amount of data to be transmitted and ii) allows to guarantee a high level of privacy to users. A particular attention will be paid to the distributed implementation of convolutive neural networks. For spatialized sound transmission, no standard exists yet to transmit high quality spatialized sound with low latency, and GRANIT aims to explore with industrial partners what low power SDR can bring, eventually designing full custom systems.

4 Hardware and Software

4.1 EEWOK

EEWOK (Energy Efficient Wireless sensOr networKs) is a proteiform platform deployed and maintained by the GRANIT and TARAN team from IRISA lab. Elected Emerging Rennes 1 platform in 2022, it regroups several elements build from many years of experience in designing very low energy sensor nodes. Depending on the application, it is available in several versions that integrate the same basic elements (low-power microcontroller and several sensors) to which are added important technological innovations (low-power FPGA, energy recovery, software radios, wake-up radio, etc.). These sensor nodes are thus deployed in networks of various scales (up to several hundred nodes for Smartsense). To verify their energy efficiency, the platform has a number of measuring devices (oscilloscopes, spectrum analysers, current analysers, etc.)

PowWow platform for WSNs We have proposed and developed PowWow (Power Optimized Hardware and Software FrameWork for Wireless Motes), a hardware and software platform designed to handle sensor networks and related applications. The main innovating features of the platform are: an energy-efficient MAC protocol (15x less power than the Zig-Bee standard was reported for equivalent applications), a much more light memory usage, a low-power FPGA for acceleration of part of the software stack (energy reduction of two orders of magnitude was reported for error control and correction) and, more recently, a board including small-scale energy harvesting features, as illustrated on Fig. 5. Our work takes benefit from PowWow to perform power measurements that can be directly introduced in energy consumption models, leading to very precise predictions for the class of preamble sampling MAC protocols. We strongly rely on this platform for the prototyping of future research in this domain.

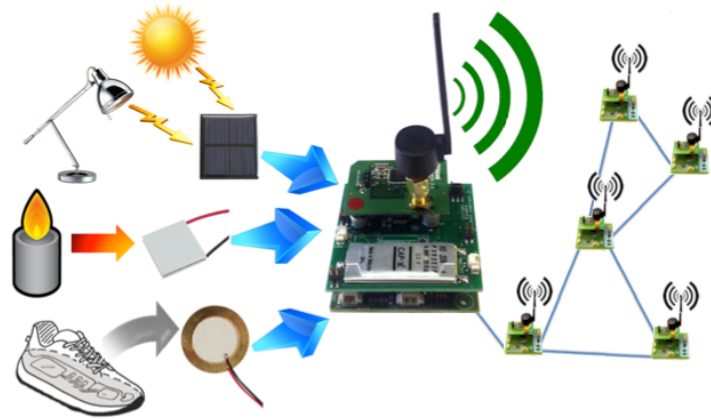


Figure 5: PowWow WSN Platform with Energy Harvesting

Energy autonomous LPWAN nodes (AMALO) The board AMALO (AutonoMous energy hArvesting Long range) has been made as part of the collaborative project ALAMO with local companies (Europrocess and CG Wireless). The main aim of this system is to have a platform interfaced with several sensors that can harvest energy and transmit information with a long range radio module. We choose to use the LPWAN LoRa technology mainly because of its flexibility. It can be used in standalone (LoRa) or as part of a standardized protocol (LoRaWAN) with private or public network.

On the block diagram on the left of the Fig. 6, two features can be identified: Energy Harvesting and Processing. Firstly, the Energy Harvesting block is made up of the energy manager chip (SPV1050), the energy source (solar panel, Peltier module, etc.), an energy storage (a super-capacitor and/or a battery) and a chip able to measure the battery current and voltage. Secondly, the Processing block consists of the Murata CMWX1ZZABZ-078 chip and the sensors (with the click-board header and/or the buses header). Click-board header allows us to easily update sensors like temperature, humidity, motion, etc. or add new radio modules and controller. We can see the different elements of the AMALO board on the described board picture (on the right of the Fig. 6).

One of the objective of this project was also to define a methodology for sizing energy harvesting components. The proposed methodology must define both energy storage devices (i.e. sizes of battery and capacitor) and harvesting components (i.e. solar panel area) of the AMALO platform. These elements depend on QoS parameters, hardware characteristics and environmental harvesting conditions.

Wireless Body Area Networks (Zyggie) Zyggie is a motion capture platform design within the labex Cominlabs BoWI project. It consists of a set of electronic components (nodes) arranged on a part or the whole body of a person. The Inertial Measurement Unit (IMU) embedded in these nodes can duplicate the movement on an avatar moving on an Android tablet, as shown by Fig. 7. Communication between nodes is performed by radio and extensive

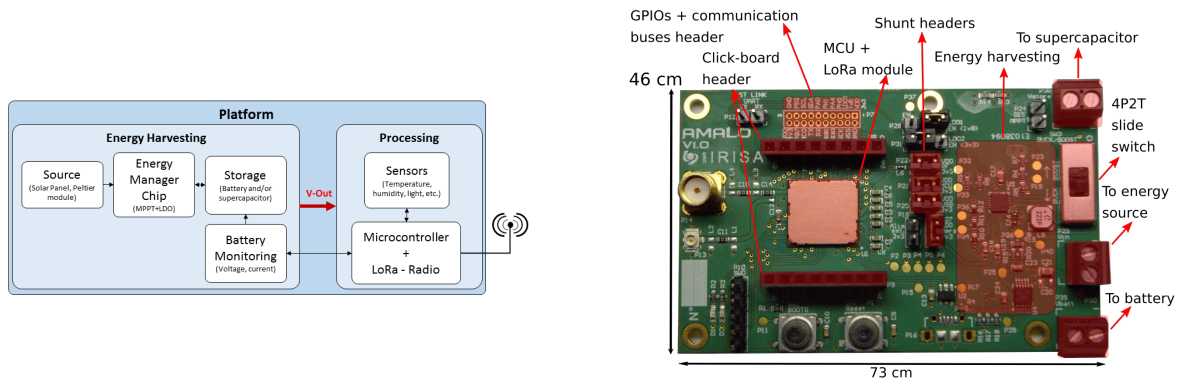


Figure 6: AMALO Block diagram (left) and described board picture (right)

energy optimization allows them an operating autonomy of 20 hours. As recharging nodes batteries also occurs wirelessly, it is therefore possible (even if this is not the case for current prototypes) to embed them in a waterproof box.

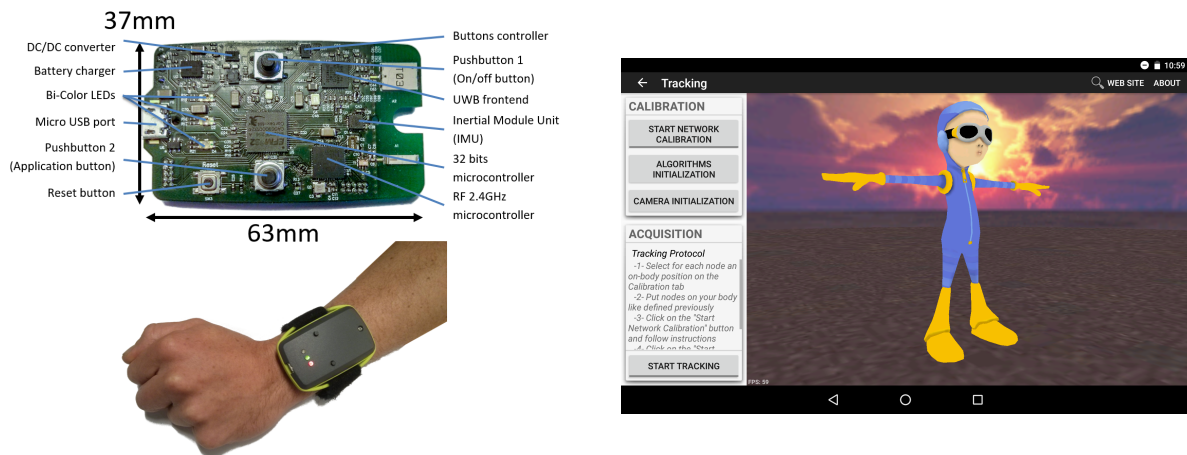


Figure 7: Zyggy V2 and avatar application

This state-of-the-art platform has enabled to thoroughly analyze BAN sensor network related challenges dedicated to motion capture. Our work focused primarily on opportunities to dispense with the energy intensive gyroscope, using radio power information received by the sensor network. The applications are animation, functional rehabilitation, optimization of sports movements, robotics, non-verbal communication in fighting situations.

A new version of this platform was recently designed with high integration constraints as shown by Fig. 8. The system embeds Bluetooth communication, new IMU with high rate data fusion and memory chip to deal with fast motion applications. A motherboard was designed to charge the battery with C-type USB connector and interface other sensors.

SDR platforms In the context of SDR paradigm, GRANIT team studies the rapid prototyping of flexible radio waveforms leveraging High Level Synthesis. Both algorithms and architec-

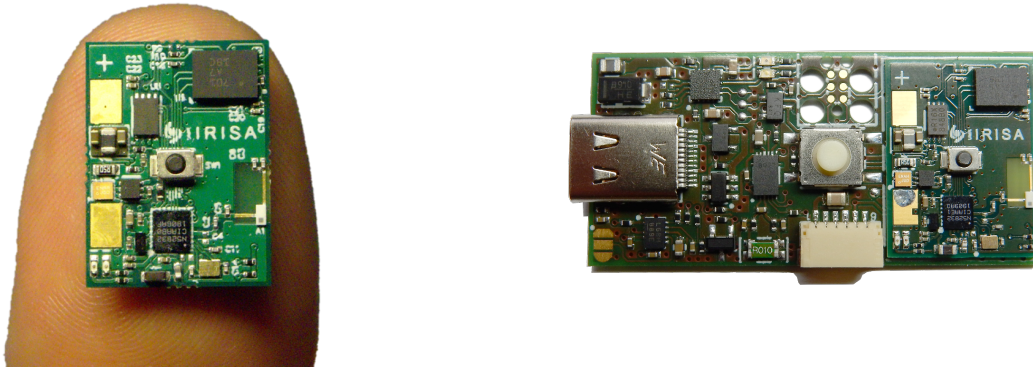


Figure 8: Zyggye Light and its motherboard

tures are taken into account to target heterogenous (software and hardware) SDR platforms. During the Equipex FIT, GRANIT members have experienced the Nutaq Perseus platform to validate our research by targeting two standards (IEEE 802.15.4 and IEEE 802.11a). We currently use Zynq-based platform from Xilinx to achieve the above mentioned heterogeneity.

The ROSE platform (Software Defined **R**adio Platform for **I**oT heterogeneous embedded systems) has been deployed in 2017. The platform is composed of several USRP-310 devices from Ettus. These SDR belong to the new generation where the architecture is based on both a PS (processing system, here a dual core CPU) and a PL (programmable logic, e.g an FPGA); based on Zynq platform. The SDR platform has been partially funded by the Brittany region, the Côtes d’Armor Department Council (CD22) and the University of Rennes.

SmartSense With 150 nodes deployed in the buildings of IRISA’s laboratories (Lannion and Rennes), the SmartSense platform makes it possible to collect a large amount of data on energy consumption and usage in buildings. This data allows a large number of applications, notably in data mining, disaggregation of electrical loads or processing of sensor data.

SmartSense consists in power measurements and sensor nodes (Fig. 9) :

- The power consumption can be obtained at different levels (individual, a room or whole stage) or on the types (light or plug sectors).
- Each node includes about twenty sensors: image, infrared, audio, radio spectrum, inertial unit, humidity, pressure, temperature, light (red, green, blue, white, UVA, UVB), distance radar with centimeter accuracy, CO2 and VOC (Volatile Organic Compound). A room may host several nodes for spatial diversity.

This project was funded by CPER SmartSense and currently takes place in the Equipex+ TERRA FORMA to monitor anthropized natural systems.

4.2 FICOP: Foton Irisa Common Optical Platform

To achieve the vision of a distributed, programmable and flexible infrastructure facing the ever growing data volume and the cloudification of services, there is a necessity to investigate,

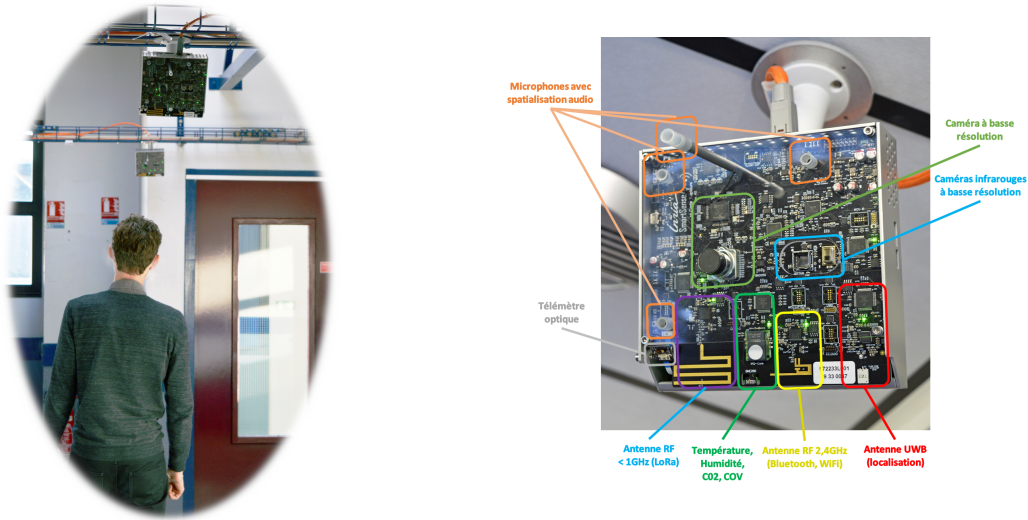


Figure 9: SmartSense network

design and experiment transport networks with high bandwidth capacity and agility for smart adaptation to application needs, based on reconfigurable optical systems controlled by software-defined networking (SDN) approaches.

To explore those issues a new optical platform was created between IRISA and Foton laboratories to merge skills of both teams, respectively on digital signal processing and optical communications. This platform was founded with CPER project and allows off-line 30GHz communication link. With 100Gsp/s Oscilloscope and 88GHz arbitrary waveform generator this equipment is used to design and test new algorithms to enhance next generation optical links.

5 New Results

5.1 Highlights

- Matthieu Gautier was promoted as a Full Professor at University of Rennes and is now in charge of the Architecture Department (D3) of IRISA.
- The GRANIT Team is particularly involved in several CMA (Compétences et Métiers d'Avenir, special call of France 2030), namely RIS3 (Intelligent, Secure, Sovereign, and Sustainable networks) and ESOS (Sustainable, open, and sovereign electronics). Both projects allow the funding of two lecturer positions for three years each, whose research within Granit is devoted to sustainable devices and networks.
- The international collaborations of GRANIT have been noticeably strengthened these last two years. Numerous joint publications with European colleagues were accepted after PhD students' doctoral stays and new projects were also selected in 2024. A huge project with ESA (European Space Agency), University of Luxemburg and Politecnico di Torino, aims at simulating spatial communications with Julia language. Besides, MIoT (Massive

IoT) is a new International ANR project with EPFL (Ecole Polytechnique Fédérale de Lausanne, Switzerland) and LabSTICC (University of South Brittany) dedicated to collaborative reception of LPWAN communications.

5.2 Energy Harvesting

Participants: Olivier Berder, Matthieu Gautier, Jesus Argote Aguilar.

Harvesting radio frequency (RF) energy is an attractive solution for powering ultralow-power (ULP) devices. However, harvesting efficiently from different RF power levels is still a challenge. In [1][5], we present a wide power range RF harvester composed of a rectifier circuit and a power management integrated circuit (PMIC). Such a wide range is achieved by associating two independent rectifiers in parallel, one specifically optimized for low RF powers. In the association, the inductive matching technique is employed in each rectifier. It consists of an inductive branch comprised of a lumped inductor and a short-circuited stub whose values are selected to minimize ohmic losses. The operation range is controlled via the inductive branch values and by following the optimal load of the rectifier circuit with the PMIC, based on the input power level. The harvester is designed at 889 MHz and manufactured by using off-the-shelf components. Measured efficiencies of 29% and 63% are obtained at -20 and 0 dBm, respectively, demonstrating the wide power range with high efficiency at low powers. At -20 dBm, the rectifier association keeps the PMIC active and delivers hundreds of nW at a regulated voltage of 1.8 V, which is suitable for ULP devices.

5.3 Wake-up radio and Power Manager Design

Participants: Olivier Berder, Matthieu Gautier, Jesus Argote Aguilar, Mickaël Le Gentil.

Wake-up radios (WuRx) are ultra-low power devices designed to continuously listen to the channel for an incoming message and activate the main node when necessary. The ultra-low power consumption of such devices opens the door to their powering only by exploiting Radio-Frequency (RF) energy. In [3], we present the integration of an RF harvester in a WuRx and addresses the goal of optimizing WuRx quality of service based on the available harvested energy. Indeed, the harvested energy depends on the RF received power and the WuRx consumed energy must be adapted to the available energy. Therefore, the number of incoming messages processed by the embedded WuRx microcontroller is adjusted based on battery status, optimizing power utilization and ensuring WuRx sustainability. Using both energy modeling and experimental measurements, we show that the RF harvester is capable of maintaining WuRx operation with input power levels as low as -18 dBm. A demonstration [4] has also been performed at ICECS conference.

5.4 Long range communications performance

Participants: Olivier Berder, Baptiste Vrigneau, Jules Courjault.

Low Power Wide Area Networks (LPWAN) are very promising for a variety of IoT applications, but they face two major challenges: energy consumption of the wireless nodes and

congestion of the networks due to the huge number of nodes involved. LPWAN transmission parameters can be optimised, e.g. using artificial intelligence algorithms, but the performance estimation made during simulations is often higher than what it is in reality. In [?] and [?], we propose a new LoRa network simulator, J-LoRaNeS. Based on the Julia programming language, it allows fast prototyping and is therefore suited to the study of different adaptive LoRa mechanisms. We used our novel simulator to clearly show the benefits of using multi-arm bandits for adaptation, but we also show that the benefits reported in the literature are not attainable when realistic network conditions are simulated.

5.5 Radio-Frequency security

Participants: Olivier Berder, Robin Gerzaguët, Matthieu Gautier, Alice Chillet, Emma Bothereau.

During this year, we have proposed to explore the Radio Frequency Fingerprint (RFF) identification with a virtual database generator that acts as a digital twin [2]. RFF is a unique signature created in the emitter transmission chain by the hardware impairments. These impairments may be used as a secure identifier as they cannot be easily replicated for spoofing purposes. In recent years, the RFF identification relies mainly on Deep Learning, and large databases are consequently needed to improve identification in different environmental conditions. In [2], we introduce RiFyFi, a virtual database generator, and explore individually the impairment impact on the classification accuracy to highlight the most relevant impairment. Different transmission scenarios are then explored, such as the impact of the data type (being a preamble or a payload) and the data size. Design rules of real databases are finally drawn for the different scenarios. We found out that the power amplifier imperfections play the biggest role in RFF accuracy and that average accuracy levels of 94% can be reached when combining the various hardware impairments at the transmitter. A specific emphasis on propagation channel impact in static and dynamic contexts has also been studied in [11].

In a second step, we have also investigate RFF identification complexity. Indeed, these new methods, which primarily relies on deep learning, faces challenges for a real-time deployment on edge devices. Both memory and computational resources are indeed presented as the major obstacle of such deployment. To address these issues, we have proposed to investigate the behavior of compressed convolutional neural networks when using unstructured pruning in a data-free scenario, on several public datasets [9]. Indeed, unstructured pruning exhibits significant compression capabilities while preserving performance with minimal computation. We show that state-of-the-art RFFI neural networks can be pruned by up to 70% of the weights, while maintaining F1-Scores above 99%, without retraining. Additionally, we advocate the use of data from a later day, referred to as resilience, as an additional indicator of network performance.

5.6 High-level synthesis

Participants: Robin Gerzaguët, Matthieu Gautier, Gaetan Lounes.

Julia has achieved strong result in heterogeneous compilation such as GPU or IPU. But

little work has been carried out for Field Programmable Gate Array (FPGA). Although Julia language with its type system, readability and libraries is an excellent fit for High-Level Synthesis (HLS). The idea introduced in [14] is to use Julia IR as a MLIR frontend, develop a new toolchain which can generate representation usable by MLIR HLS tools such as ScaleHLS.

5.7 Sensor-aided Energy Disaggregation

Participants: Baptiste Vrigneau, Pascal Scalart, Nidhal Balti.

Non-Intrusive Load Monitoring (NILM) attempts to break down the aggregate electrical consumption signal into the power consumption of each individual appliance, which is a classic example of blind source separation problems. This paper [6] proposes a deep neural network that combines a classification subnetwork with a regression subnetwork for solving the NILM problem. In particular, we use a dual CNN-RNN architecture, in which the CNN is used to detect the appliances states and the RNN to predict the associated power value. Experiments conducted on a real-world dataset demonstrate that our model significantly outperforms state-of-the-art models while having good generalization capacity, achieving roughly 75% MAE gain and 60% RMSE gain to unseen appliances.

Non-Intrusive Load Monitoring (NILM) attempts to break down the aggregated electrical consumption signal into the power consumption of each individual appliance, which can provide helpful understanding on energy consumption patterns and helps reduce overall energy usage and costs. This paper [8] proposes an occupancy-aided energy disaggregation approach to address the NILM problem. Our methodology encompasses three key steps: firstly, features extraction from environmental sensors through the training of a DAE model; secondly, inference of occupancy information using the K-means algorithm; and finally, the disaggregation process using a Recurrent Neural Network (RNN) model, incorporating the detected occupancy status alongside power data. Experiments conducted on our real-world dataset demonstrate that our method significantly outperforms the state-of-the-art models while having good generalization capacity, achieving roughly 40% Mean Absolute Error (MAE) gain and 30% Root Mean Squared Error (RMSE) gain on a specific appliances disaggregation compared to the conventional NILM approach where only the power data is used.

Deep Neural Networks (DNNs) have been the subject of much research over the years, with a particular emphasis on Convolutional Neural Networks (CNNs) and Recurrent Neural Networks (RNNs). The purpose of the study [7] is to evaluate the energy usage of single-source appliances, like smart meters, in the context of Non-Intrusive Load Monitoring (NILM). This paper introduces a novel workflow for Non-Intrusive Load Monitoring (NILM) by combining a regression subnetwork with a classification subnetwork. The architecture incorporates an RNN with attention mechanism in the regression and classification networks, drawing inspiration from successful applications in temporal attention. The experiments conducted on our own dataset called SmartSense shows that our proposed architecture outperforms the state-of-the-art under various conditions.

5.8 Audio coding

Participants: Pascal Scalart, Thomas Muller.

We recently focused on audio coding schemes based on artificial neural networks. In [15], we addressed the problem of latent space quantization in neural audio coding. A covariance analysis of latent space was performed on several pre-trained audio coding models (Lyra V2, EnCodec, AudioDec). We proposed to truncate the latent space representation using a Karhunen-Loève transform (KLT) which is applied on learned residual vector quantization (RVQ) codebooks. The proposed method was applied in a backward-compatible way to EnCodec, and we show that quantization complexity and codebook storage can be reduced (by 43.4%), with no noticeable difference in subjective AB tests.

Moreover, with the emergence of neural audio codecs and new objective quality models based on machine learning, there is a need to clarify which models predict accurately the perceptual quality of coded speech. In [13], we analyze the speech quality available from recent neural audio codecs targeting low bitrates through degradation Mean Opinion Score (DMOS) scores. The following state of the art neural audio codecs (LPCNet, Lyra V2, EnCodec, AudioCraft, AudioDec, Descript Audio Codec) were considered as well as traditional codecs such as Opus, EVS that were also included as performance yardsticks. We compare in [12] ten objective models against subjective scores. Results showed that the tested objective models do not perform equivalently in terms of overall evaluation metrics before and after mapping; a subset of tested models could predict quality increase as a function of codec bitrate, and no model could predict quality ranks for all pair comparisons between codecs, with issues of codec under- or over-prediction.

5.9 Physical activity monitoring

Participants: Olivier Berder, Souébou Bouro, Antoine Courtay, Mickaël Le Gentil.

Canoeing and kayaking are water-based sports activities that involve propelling, steering, and balancing vessels using paddles. This practice, also known as paddle sports, has been gaining popularity, particularly with its inclusion in the Olympic Games. The improvement of technical skills and the pursuit of optimal performance have become essential in the training of kayakers. Performance in sprint kayaking depends on the coordination between arm and leg movements, and the pressure exerted by the feet on the footrests of the kayak is a very important factor. Traditional measurement methods are limited by their bulkiness and lack of portability, while recent wireless systems are still complex and intrusive. We proposed in [10] a new system for measuring the pressure distribution on the kayak footrests using Velostat, a piezoresistive material. To reduce reduce mechanical interferences and correct measurement uncertainties between adjacent cells, a specialized application of Markov Random Field concepts and Gibbs sampling is implemented. Our results demonstrate that the system is capable to detect high and lowpressure areas and to quantify the pressure on the unsupported side.

6 Contracts and Grants with Industry

6.1 CIFRE PhD Grant Prolann/seismowave

Participants: Olivier Berder, Antoine Courtay, Samir-Sharif El Rhaz.

This is a Cifre contract with Prolann/SeismoWave company that includes the supervision of Samir-Sharif El Rhaz.

During the last few years, infrasound sensors have been getting an increased interest, due to their ability to provide a near real-time and continuous monitoring of natural hazards (e.g. climate-related phenomena, detection of seismic event like earthquakes or unusual volcano activity), but also the potential to survey and control comprehensive nuclear Test Ban Treaty over long time periods.

Prolann/SeismoWave is one of the major companies in this field and offers a wide range of infrasound and seismic sensors, some of them based on common patents with CEA. However, energy consumption of current infrasound systems is very high and their deployment and maintenance very heavy.

The goal of this thesis is to propose energy autonomous infrasound devices. To tackle this challenge, power management strategies will be proposed while considering long range communications within the sensor network. The device will be as generic as possible to support different QoS and energy harvesting conditions.

6.2 CG-Wireless

Participants: Olivier Berder, Baptiste Vrigneau, Jules Courjault.

CG-Wireless is a consulting company and Design House specialized in designing wireless products. Based in Brittany, CG-WIRELESS is specialized in the design of products using the most advanced radio technologies. CG-WIRELESS carries out in-house research to offer their customers turn- key radio solutions, as platform ready reference design.

The aims of the contract are to study the reinforcement learning for IoT and about SDR solutions for the nodes. A simulation tools for LoRa network optimisation is also developed. It permits to co-found the PhD of Jules Courjault with the European EIT Digital program.

6.3 European Space Agency (ESA)

Participants: Robin Gerzaguet, Paul Bazerque.

The European Space Agency (ESA) is an intergovernmental organization dedicated to the exploration and utilization of space. Established in 1975, it coordinates the space activities of 22 member states, fostering advancements in science, technology, and satellite applications. ESA's mission is to shape the development of space exploration and innovation. The IRIS² (Infrastructure for Resilience, Interconnectivity, and Security by Satellite) program by ESA aims to develop a secure, space-based communication system for Europe. It focuses on enhancing connectivity, resilience, and cybersecurity through advanced satellite technologies.

The aims of the contract is the development of a Julia-based software simulator capable of implementing end-to-end physical layer satellite communications and supporting key waveforms such as 5G NR, DVB-S2X, and DVB-RCS2, alongside a variety of channel and receiver impairment conditions.

6.4 Jacob Goldman

Participants: Mickaël Le Gentil, Antoine Courtay, Olivier Berder.

Related to indoor localisation activities, expertise of the team was requested in the context of fitness applications by Jacob Goldman (Switzerland) in order to develop a product.

The objective is to develop a solution to track users activity in a fitness room. This system needs to develop wireless sensor network with dedicated sensors and associated signal processing to offers metrics to users for any fitness machine. Following constraints must be addressed: easy to install, ease to use, light weight and low power.

A preparatory study with academic and industrial state-of-the-art is done with key information to help designing a proof of concept.

7 Other Grants and Activities

7.1 National Collaborations

- **ANR PRC OWL (2024-2028)**

Participants: Robin Gerzaguet, Olivier Berder, Matthieu Gautier, Mickaël Le Gentil
Project OWL (Operating Within Limits) proposes a new model of computation for more frugal intelligent autonomous sensors: circadian artificial intelligence (AI). The targeted applications are in the field of environmental monitoring, especially bioacoustics. This model is particularly well suited for intermittent systems, i.e., sensors without batteries that are powered by ambient energy. Circadian AI is interested in observing phenomena that have a period of one day. It exploits the fact that this period is shared with the availability of solar energy, which is used to power the sensors. This correlation allows the sensors to temporally shift the costly computations required to perform the AI functions to times when the observed phenomenon is at rest and energy is abundant. The project proposes two main contributions. The first is to propose a new structure for circadian AI algorithms that allows for this temporal shift in computation. The second is to provide the software and hardware infrastructure necessary to run these algorithms on an intermittent sensor. OWL consortium is composed of IRISA (Granit team), INRIA (PACAP team) and LS2N (SRC and SIMS teams).

- **ANR PRC PERENNE (2024-2028)**

Participants: Robin Gerzaguet, Olivier Berder, Matthieu Gautier, Baptiste Vrigneau
In PERENNE, we propose to develop a fully programmable communication stack for wireless networks by leveraging the software-defined paradigm (namely, Software Defined Networking - SDN, and Software Defined Radio - SDR). We target the ultimate flexibility, from the reconfiguration of the protocol suite at runtime to the deployment of any future wireless technologies on the same infrastructure. The ultimate goal is to sustain the deployed infrastructure in the very long term, fighting against premature obsolescence without endangering innovation. We will transform each element of the communication stack into a computer program, i.e. a set of instructions in a specific language, that will be transmitted and executed by the end devices. Such an approach raises major scientific

challenges such as securing the control plane, optimizing the system efficiency (in terms of energy consumption for example), or guaranteeing system convergence. PERENNE consortium is composed of IRISA (Granit and OCIF teams), ICube (Network research group) and ANFR.

- **ANR JCJC RedInBLack (2023-2026)**

Participants: Robin Gerzaguët, Olivier Berder, Matthieu Gautier, Paul Bazerque
TEMPEST attacks target device that unintentionally emits sensible data through an electromagnetic channel. This kind of compromising are due to coupling, hardware impairments or physical proximity between components. Sensitive information emitted by these devices may be recovered passively by any radio component and more particularly by software defined radio, now capable to sample very large bandwidths. The objectives of RedInBlack are many-folds i) Assess new radio fingerprint based methods to identify devices through learning methods fed by large bandwidths features ii) propose coherent and non-coherent decoding methods to recover the sensitive data emitted by the device iii) develop effective methods able to cope with large bandwidths to identify TEMPEST channel and recover sensitive data in real time with the use of a new hardware/software methodology based on Julia langage.

- **ANR Labex CominLabs - NOP (2021-2024)**

Participants: Matthieu Gautier, Olivier Berder, Robin Gerzaguët, Mickaël Le Gentil
Intermittent computing is an emerging paradigm for batteryless IoT nodes powered by harvesting ambient energy. It intends to provide transparent support for power losses so that complex computations can be distributed over several power cycles. NOP aims at improving the efficiency and usability of intermittent computing, based on consolidated theoretical foundations and a detailed understanding of energy flows within systems. For this, it brings together specialists in system architecture, energy-harvesting IoT systems, compilation, and real-time computing. NOP consortium is composed of IRISA (Granit team), IETR (SysCom) team, INRIA (PACAP team) and LS2N (SRC team). Within this project, our GRANIT team will develop both hardware and software parts of the platform.

- **ANR PRC U-Wake (2021-2024)**

Participants: Matthieu Gautier, Olivier Berder, Mickaël Le Gentil
ANR U-Wake project aims to achieve a breakthrough in the field of IoT by developing a disruptive wake-up receiver solution based on (1) a bioinspired architecture achieved with an industrial CMOS technology (with transistors operating in deep sub-threshold regime) and (2) Electro Magnetic energy harvesting. The originality lies in the association of a Radio Frequency (RF) demodulator to a neuro-inspired detector and dataprocessing through a spiking neural network (SNN), resulting in a complete ultra-low power wake-up radio supplied with a voltage of a few 100 mV. The U-Wake consortium is composed of very complementary laboratories in computer science and electrical engineering domains, namely IRISA, IEMN (Lille) and CITI (Lyon). Within this project, our GRANIT team will be in charge of the implementation of the prototype design. In collaboration with IEMN, it will embed the bioinspired IC in a new type of wake-up receiver and with CITI

the energy harvester.

- **AMI ADEME Goodflow (2021-2024)**

Participants: Olivier Berder, Matthieu Gautier, Mickaël Le Gentil

GoodFlow offers a solution that automates the monitoring and management of reusable industrial packaging (tertiary packaging), consisting of an IoT to put in each packaging and a web and mobile application. The lack of genericity/reliability of current geolocation systems makes impossible to automate inventories, since it can not be proved who is responsible for industrial packaging in real time.

GoodFlow therefore wants to design an on-board system making it possible to provide concrete proof of the site responsible for each packaging 24 hours a day, 7 days a week, without human intervention, without infrastructure, and with IoTs having a lifespan equal to those of the packaging (7 to 10 years). To achieve this, the GoodFlow project aims to integrate the following technologies on a suitable electronic card: on-board AI fed by an accelerometer to wake-up the node on particular events, a wake-up radio to discover the neighborhood while consuming quasi nothing, and a multi-radio MAC layer to connect surrounding radio networks and definitely attest the positioning (and eventually the responsible) of the packaging.

Goodflow leverages a well-balanced consortium composed of an SME (Goodflow) and 4 laboratories (Lab-STICC, INRIA Lille, IEMN and IRISA).

7.2 International Collaborations

- **France-Japan ANR/JST Call on EDGE IA : Light-Swift Project (2023-2027)**

Participants: Olivier Berder, Robin Gerzaguët, Pascal Scalart

Artificial intelligence (AI) brings without any doubt huge opportunities to optimize efficiency of every industrial application and is a key point of Industry 4.0. The deployment of various sensors in factories, also called Industrial Internet of Things (IIoT) can either help workers in charge of machine maintenance by detecting abnormal behaviours, thus preventing machine breakdown, or help to localize objects or persons in such complex environments. AI algorithms probably represent the best solution to cope with the huge amount of data provided by sensors, but their complexity is also a severe drawback and the processing is mainly centralized.

Energy is crucial for IIoT, since the more sensors are deployed, the more difficult it becomes to ensure sufficient energy, as batteries would need to be recharged more frequently. Moving the processing closest as possible to the sensors would avoid energy hungry transmissions of data. Most of the latter is indeed useless, since AI algorithms need to be fed with descriptors more than raw data. To further enhance energy efficiency of Edge AI, LIGHT-SWIFT aims at proposing a new methodology to reduce the complexity of AI algorithms, paving the way for sustainable smart sensors in Industry 4.0. This methodology will be applied to sound sensor nodes able to detect unusual situations, either in machine behaviour but also in the general context of the factory. In case of emergency, the system may have to cope with massive amounts of additional data, entailing a crucial need for extremely reliable high data rate transmissions, despite the

limited spectrum resources. The methodology of LIGHT-SWIFT project will therefore be applied to the wireless transmissions themselves, to optimize the radio resource access, while achieving the best possible energy efficiency. To reach this goal, our project will leverage a well-balanced consortium composed of two academic partners, IRISA and NII, that work respectively on energy efficient wireless sensor networks and edge AI for wireless communications, the Small and Medium-sized Enterprise (SME) Wavely specialized in sound event detection for IIoT, and one of the largest telecommunications operating companies in the world, NTT, with applications in Industry 4.0.

- **France-Tunisie PHC Utique : frugal AI applied to NILM**

Participants: Pascal Scalart, Baptiste Vrigneau

The Non Intrusive Load Monitoring challenge is to determine states of electrical devices and their electrical consumptions by using a global measurement. The problem is to separate several signals, directly linked to the state of the device, from the sum of all electrical consumptions. The unknown values are the consumption in a first step and the state device in a second step. Thanks to the platform SmartSense, part of EEWOK, we are able to collect all individual consumptions but also the aggregated power a several levels (rooms and global) of the laboratory IRISA at Lannion and Rennes. However, the challenge is still difficult and not still tackled. Indeed, in some cases classical NILM algorithms provide good result but some other device combination activations still mislead them. Our works introduce sensors in order to help the NILM and may be called semi-intrusif load monitoring (SILM), hybrid NILM or sensor-aided NILM. New solutions based on deep learning was proposed but AI requires huge hardware resources. The aim of the collaboration is to explore solutions of pruning, quantization, binarization of RNN in order to run efficient NILM algorithms.

8 Dissemination

8.1 Scientific Responsibilities

- O. Berder, M Gautier and B. Vrigneau are members of Scientific Committee of IUT Lannion.
- R. Gerzaguet is member of the Scientific Committee of ENSSAT (since 2020).
- R. Gerzaguet is a member of the IRISA Laboratory Council (since 2021).
- R. Gerzaguet is a member of Collège numérique France 2030 (since 2023)
- O. Berder is a member of the Scientific Committee of EUR Digisport.
- O. Berder is a member of Labelling Committee (CSV) of Images & Networks cluster
- O. Berder is a coordinator of Wireless Devices topic at CNRS GDR SoC2.
- M. Gautier is a coordinator of Architecture and algorithms Topic at GDR IASIS (since 2023).

- M. Gautier is the head of the D3 "Computer Architecture" Department of IRISA Lab since September 2024.

8.2 Involvement in the Scientific Community

Scientific events:

- O. Berder and M. Gautier organized a special session "RF energy for powering IoT devices: circuits, systems, and applications" at IEEE ICECS, Bordeaux, November 2024.

PhD committees:

- O. Berder served as a reviewer for the PhD of Marika Kumar, *Radio Access Network Sublicing in Closed Control Loop for Improved Slice Performance Management*, defended at Tallin University of Technology (Taltech), Estonia, January 26, 2024
- O. Berder served as a reviewer for the PhD of Nils Defauw, *Contributions to vehicle recognition in occupancy grids for an embedded perception system*, defended at Université Grenoble Alpes, March 8, 2024
- O. Berder served as a member of Defence Committee for the PhD of Hugo Pillin, *Quantum walk search algorithm on hypercube : Eigenanalysis and calculation of the probability of success in polynomial time*, defended at Université de Bretagne Occidentale, April 5, 2024
- O. Berder served as the president of Defence Committee for the PhD of Sébastien Maudet, *Analyse et modélisation énergétiques des réseaux de communication pour l'IIoT*, defended at Université de Nantes, June 24, 2024
- O. Berder served as a member of Defence Committee for the PhD of Abdo-Rahmane Anas Laaraïbi, *Development of an autonomous system based on piezoresistive sensors for quantitative sports movement*, defended at Université de Bretagne Occidentale, July 9, 2024
- M. Gautier served as the president of Defence Committee for the HDR of Thierry Granpierre, *Adéquation Algorithme Architecture : Modélisations, Implémentations, Optimisations pour Applications Temps Réel Embarquées*, defended at Université Gustave Eiffel, January 29, 2024
- R. Gerzaguet served as a member of Defence Committee for the PhD of Pierre Ayoub, *Compromising Electromagnetic Emanations: Side-Channel Leakages in Embedded Devices*, defended at Université de Sorbonne & Eurecom, December 03, 2024

Editorial and reviewing activities:

- O. Berder is a member of the Editorial Board of *International Journal of Distributed Sensor Networks*

- O. Berder is a member of the Editorial Board of *Wireless Communications and Mobile Computing*
- O. Berder is a member of the Editorial Board of *Sensors*
- O. Berder is a member of Technical Program Committee of IEEE PIMRC, IEEE SAS, ACM EWSN, ICT and is a reviewer for IEEE TSP, TWC, ToN, JSAC, ICC, GLOBECOM
- M. Gautier was a member of technical program committee of IEEE WCNC, IEEE ISWCS, IEEE PIMRC and IEEE Globecom.
- B. Vrigneau was a member of technical program committee of IEEE PIMRC and 4th International Workshop on Non-Intrusive Load Monitoring.
- M. Gautier served as a reviewer for SiPS and ICECS conferences, and MICPRO journal.
- B. Vrigneau served as a reviewer for IEEE Communications Letters, PIMRC, ISTC, WCMC, MDPI Sensors, IEEE Trans. on Vehicular Technology.
- Robin Gerzaguët served as a reviewer for IEEE EUCNC, IEEE WCNC, IEEE Access, IEEE Transaction on Wireless Communications and IEEE Transactions on Aerospace and Electronic Systems.

8.3 Teaching Responsibilities

IUT stands for *Institut Universitaire de Technologie* and ENSSAT stands for *École Nationale Supérieure des Sciences Appliquées et de Technologie* and is an *école d'Ingénieurs*. Both are located in Lannion and part of the University of Rennes.

- O. Berder is Deputy Director of IUT Lannion.
- O. Berder and M. Gautier are in charge of the CUPGE (Cycle Universitaire Préparatoire aux Grandes Ecoles) ENSSAT, respectively for the Physics and Cybersecurity grants at IUT Lannion.
- A. Courtay is supervising the first year students of the Electronics Engineering department of ENSSAT.
- R. Gerzaguët is supervising the third year students of the Electronics Engineering department of ENSSAT.
- R. Rocher is the Head of the Network and Telecommunications Department at IUT Lannion.
- M. Gautier is member of the French National University Council since 2015 in signal processing and electronics (Conseil National des Universités en 61e section) - elected again in 2019 and 2023.

- M. Gautier is supervising the second year students of the Network and Telecommunications Department at IUT Lannion and is in charge of Studies Pursuit.
- B. Vrigneau is the Head of the department Multimedia and Internet at IUT Lannion.

8.4 Teaching

Main courses:

- O. Berder: signal processing, 60h, IUT Lannion (L2)
- O. Berder: sensors and control, 70h, IUT Lannion (L2)
- O. Berder: digital systems, 60h, IUT Lannion (L1)
- O. Berder: Energy Harvesting, 30h, IUT Lannion (L3)
- O. Berder: IoT and connected objects, 14h, ENSSAT (M2)
- A. Courtay: digital electronics, 116h, ENSSAT (L3)
- A. Courtay: PCB conception, 14h, ENSSAT (L3)
- A. Courtay: PCB conception, 20h, ENSSAT (M1)
- A. Courtay: PCB conception, 16h, IUT Lannion (L3)
- A. Courtay: digital electronics communication interfaces, 68h, ENSSAT (M1)
- A. Courtay: digital electronics: Laser diode driver, 40h, ENSSAT (M1)
- M. Gautier: computer architecture, 36h, IUT Lannion (L1)
- M. Gautier: telecommunications, 138h, IUT Lannion (L1)
- M. Gautier: digital communications, 30h, IUT Lannion (L2)
- M. Gautier: Embedded systems and connected objects, 90h, IUT Lannion (L3)
- M. Gautier: IoT and connected objects, 10h, ENSSAT (M2)
- R. Rocher: electronics, 44h, IUT Lannion (L1)
- R. Rocher: telecommunications, 82h, IUT Lannion (L1)
- R. Rocher: signal processing, 12h, IUT Lannion (L2)
- R. Rocher: digital communications, 48h, IUT Lannion (L2)
- P. Scalart: non-linear optimisation, 18h, Master by Research (SISEA) and ENSSAT (M2)

- P. Scalart: parametric modelization, optimal and adaptive filters, 24h, Master by Research (SISEA) and ENSSAT (M2)
- P. Scalart: source coding, 14h, Master by Research (SISEA) and ENSSAT (M2)
- P. Scalart: cellular networks, 24h, ENSSAT (M2)
- P. Scalart: digital communication systems, 32h, ENSSAT (M1)
- P. Scalart: random signals and systems, 12h, ENSSAT (M1)
- R. Gerzaguet: Micro-electronics, 46h, ENSSAT (L3)
- R. Gerzaguet: Digital Signal processing, 60h, ENSSAT (M1)
- R. Gerzaguet: Wireless network, 9h, ENSSAT (M1)
- R. Gerzaguet: Wireless communication, 16h, ENSSAT (M2)
- R. Gerzaguet: GIT & Test Driven Development, 8h, ENSSAT (L3)
- R. Gerzaguet: System On Chips, 22h, ENSSAT (M2)
- R. Gerzaguet: Hardware security, 18h, ENSSAT (M2)
- B. Vrigneau: digital datas for multimedia, 50h, IUT Lannion (L1, L2)
- B. Vrigneau: dataviz with JS/HTML/CSS, 24h, IUT Lannion (L2)
- B. Vrigneau: wireless sensor data collect and visualization (LoRaWAN), 31.5h, IUT Lannion (L3)

9 Bibliography

Articles in referred journals and book chapters

- [1] J. ARGOTE-AGUILAR, M.-D. WEI, F.-D. HUTU, G. VILLEMAUD, M. GAUTIER, O. BERDER, R. NEGRA, “Wide Power Range RF Energy Harvester for Powering Ultralow-Power Devices”, *IEEE Transactions on Microwave Theory and Techniques*, May 2024, p. 1, <https://inria.hal.science/hal-04589875>.
- [2] A. CHILLET, R. GERZAGUET, K. DESNOS, M. GAUTIER, E. S. LOHAN, E. NOGUES, M. VALKAMA, “Understanding Radio Frequency Fingerprint Identification With RiFyFi Virtual Databases”, *IEEE Open Journal of the Communications Society*, June 2024, p. 19, <https://inria.hal.science/hal-04617950>.

Publications in Conferences and Workshops

- [3] J. ARGOTE-AGUILAR, M. GAUTIER, O. BERDER, M. LE GENTIL, F.-D. HUTU, G. VILLEMAUD, “Wake-Up Radio’s Quality of Service adjustment by leveraging RF Energy Harvesting”, *in: IEEE International Conference on Electronics Circuits and Systems (ICECS)*, Nancy, France, November 2024, <https://hal.science/hal-04806240>.
- [4] J. ARGOTE-AGUILAR, M. LE GENTIL, M. GAUTIER, O. BERDER, F.-D. HUTU, G. VILLEMAUD, “Demo Abstract: Online QoS adaptation in RF energy powered Wake-Up Radios”, *in: IEEE International Conference on Electronics Circuits and Systems (ICECS)*, Nancy, France, November 2024, <https://hal.science/hal-04806242>.
- [5] J. ARGOTE-AGUILAR, M.-D. WEI, F.-D. HUTU, G. VILLEMAUD, M. GAUTIER, O. BERDER, R. NEGRA, “Récupérateur d’énergie RF à grande dynamique de puissance”, *in: 18ème Colloque National du GDR SOC2*, Toulouse, France, June 2024, <https://hal.science/hal-04619541>.
- [6] N. BALTI, B. VRIGNEAU, P. SCALART, “Sensor-Aided NILM with Gaussian Mixture Models”, *in: 2023 31st European Signal Processing Conference (EUSIPCO)*, IEEE, p. 1529–1533, Helsinki, France, September 2023, <https://hal.science/hal-04399811>.
- [7] N. BALTI, B. VRIGNEAU, P. SCALART, “Enhancing Energy Disaggregation with Attention-Based Neural Network”, *in: SEB 2024*, Santa Cruz, France, September 2024, <https://hal.science/hal-04907448>.
- [8] N. BALTI, B. VRIGNEAU, P. SCALART, “Occupancy detection for enhanced energy disaggregation”, *in: KES, 246*, p. 529 – 537, Seville, Spain, September 2024, <https://hal.science/hal-04907241>.
- [9] E. BOTHEREAU, A. CHILLET, R. GERZAGUET, M. GAUTIER, O. BERDER, “Investigating Sparse Neural Networks for Radio Frequency Fingerprint Identification”, *in: IEEE Vehicular Technology Conference (VTC2024-Fall)*, Washington DC, United States, October 2024, <https://inria.hal.science/hal-04738765>.
- [10] S. BOURO, A. COURTAY, M. LE GENTIL, G. NICOLAS, N. BIDEAU, O. BERDER, “A New System for Measuring Pressure Distribution on Kayak Footrests Using Velostat”, *in: 31st IEEE International Conference on Electronics Circuits and Systems (ICECS)*, Nancy, France, November 2024, <https://hal.science/hal-04900930>.
- [11] A. CHILLET, R. GERZAGUET, K. DESNOS, M. GAUTIER, E. S. LOHAN, E. NOGUES, M. VALKAMA, “How to Design Channel-Resilient Database for Radio Frequency Fingerprint Identification?”, *in: IEEE International Conference on Communications (ICC), 26*, p. 1655–1660, Denver, United States, June 2024, <https://inria.hal.science/hal-04617952>.
- [12] T. MULLER, S. RAGOT, V. BARRIAC, P. SCALART, “EVALUATION OF OBJECTIVE QUALITY MODELS ON NEURAL AUDIO CODECS”, *in: 18th International Workshop on Acoustic Signal Enhancement (IWAENC 2024)*, IEEE signal processing society, Aalborg, Denmark, September 2024, <https://hal.science/hal-04921783>.
- [13] T. MULLER, S. RAGOT, L. GROS, P. PHILIPPE, P. SCALART, “Speech quality evaluation of neural audio codecs”, *in: INTERSPEECH*, Kos Island, Greece, September 2024, <https://hal.science/hal-04921755>.

Miscellaneous

- [14] G. LOUNES, R. GERZAGUET, M. GAUTIER, “Julia meets the FPGA : Higher-level synthesis methodology for heterogeneous hardware and software architectures”, Conference on the Julia programming language (JuliaCon), July 2024, Poster, <https://hal.science/hal-04907355>.
- [15] T. MULLER, S. RAGOT, P. PHILIPPE, P. SCALART, “Post-Training Latent Dimension Reduction in Neural Audio Coding”, working paper or preprint, March 2024, <https://hal.science/hal-04488929>.